

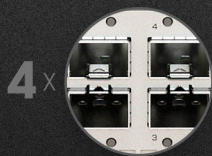


CRS520-4XS-16XQ-RM

An **ultra-fast enterprise switch**
with extra processing power due to the CCR series CPU &
the **best price per 100 Gigabit port** on the market!



LOW POWER CONSUMPTION:
ONLY UP TO 123W*
GREAT FOR YOUR WALLET,
GREAT FOR THE PLANET!



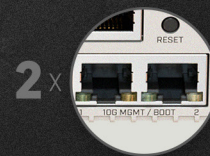
**25 GIGABIT
SFP28 PORTS**

(SUPPORT 1G / 2.5G / 10G / 25G SPEEDS,
depending on module)



**100 GIGABIT
QSFP28 PORTS**

(SUPPORT 4X 1G / 4X 2.5G / 4X 10G /
4X 25G / 1X 40G / 2X 50G / 1X 100G SPEEDS,
depending on module)



**10 GIGABIT
ETHERNET PORTS**

(SUPPORT 10M / 100M / 1G / 10G SPEEDS)



**4GB DDR4
RAM**



**HOT-SWAP
POWER SUPPLIES
& COOLING**



**MIGHTY
QUAD-CORE
2 GHZ ARM CPU**

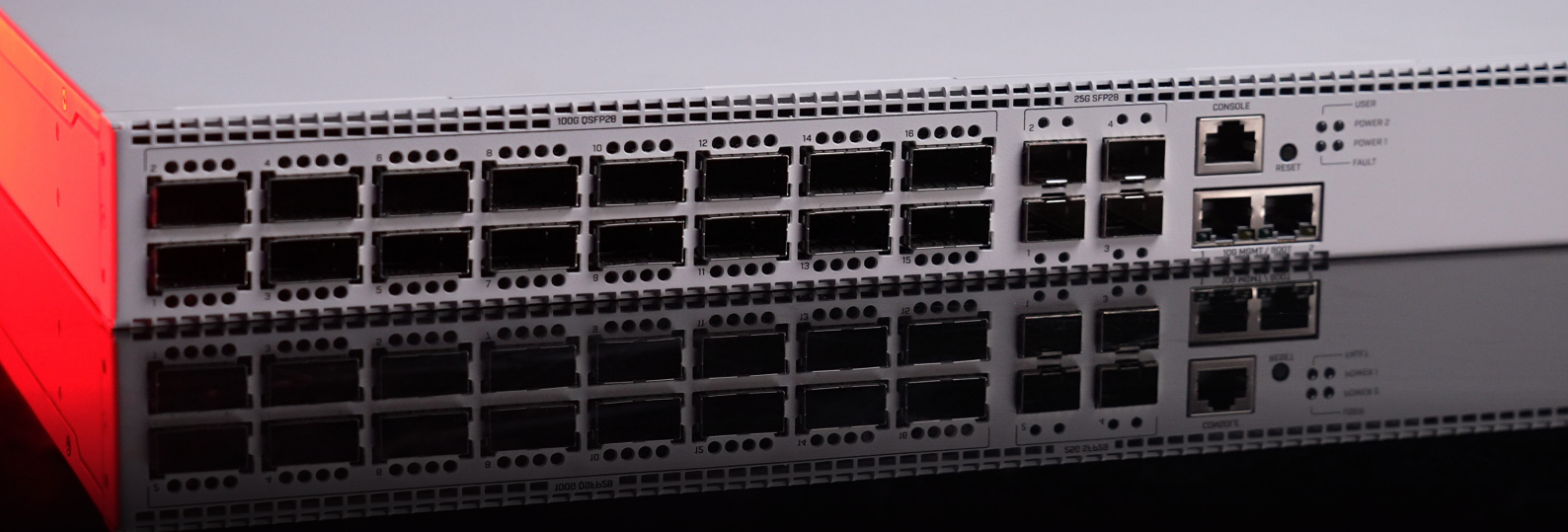


**CONSOLE
PORT**

* Depending on the attachments

Welcome to the forefront of networking: the future-proof CRS520-4XS-16XQ-RM with **extra processing power, 4 GB of DDR4 RAM**, and the best price per 100 Gigabit port we've seen so far.

With **16x 100 Gigabit** QSFP28 ports, **4x 25 Gigabit** SFP28 ports, and an extra **pair of 10 Gigabit Ethernet** ports, this switch can bring a lot of value to complicated enterprise networks, data centers, multimedia studios, and other setups where you would typically use several devices. Now – a single CRS520 can do the trick!



Avid CCR users might recognize the **powerful quad-core ARM CPU** running at 2 GHz, and ask – why would a switch need all that power? Two reasons:

1) CRS520 is more than a switch. You can **run OSPF/BGP**, out-of-band/management **VPNs**, ACLs, Jumbo frames and even **L3HW Offloaded routing**;

2) Future-proofing: as our friends at Marvell keep expanding the capabilities of their spectacular switch-chips, our in-house software team is busy exploring ways to add even more Hardware Offloaded features. You can expect software updates that will take the CRS520 to the **next** level! And all that without any paywalls or subscriptions.

Two hot-swap power supplies and four hot-swap fans for cooling are included. This switch can also be powered by the [PW48V-12V150W](#) Hot Swap -48V DC telecom power supply, available separately.

• Specifications

Product code	CRS520-4XS-16XQ-RM
CPU	Quad-Core AL52400 2 GHz
CPU architecture	ARM 64bit
Size of RAM	4 GB
RAM type	DDR4
Storage	128 MB, NAND
Number of 1G/2.5G/5G/10G Ethernet ports	2 (Support 10M / 100M / 1G / 10G speeds)
Number of 25G SFP28 ports	4 (Support 1G / 2.5G / 10G / 25G speeds, depending on module)
Number of 100G QSFP28 ports	16 (Support 4x 1G / 4x 2.5G / 4x 10G / 4x 25G / 1x 40G / 2x 50G / 1x 100G speeds, depending on module)
Switch chip model	98CX8410
Operating system	RouterOS v7 only, License level 5
Dimensions	443 x 367 x 44 mm
Operating temperature	-20°C to +50°C

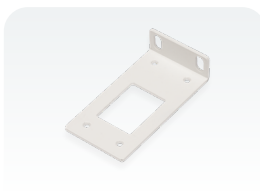
• Powering

Number of AC inputs	2
Nominal current	10.25 A
Max current	12.5 A
AC input range	100-240 V
Frequency	47-63 Hz
Max power consumption (without attachments)	123 W
Max power consumption	150 W

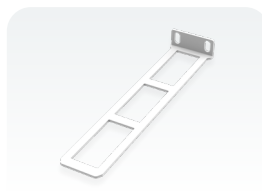
• Included parts



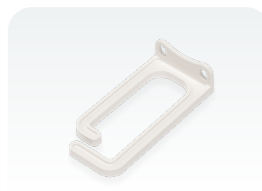
2 Power cords



Rackmount ears



Rackmount rear support ears



Cable management bracket



Fastening set