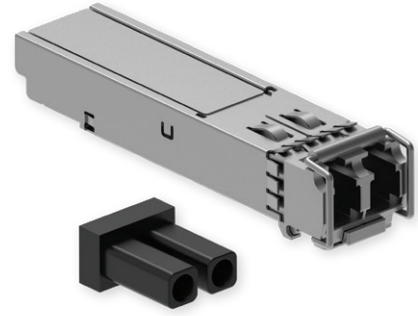


1.25 Gb/s SR SFP TX TRANSCEIVER



TECHNICAL DATA

GENERAL

DS-SFP112X-ECE0_1.25G SR SFP TX-A1

| | |
|------------------------|---------------------------------------|
| Connector | Duplex LC |
| Supported media | Multi-mode fiber |
| Data rate | 1.25 Gb/s |
| Max. power consumption | < 1 W |
| Cable distance | Up to 550 m reach over 50 /125 μm MMF |
| Operating humidity | 5 to 85 % |
| TX wavelength | 850 nm |
| Temperature range | -40°C ~ +85°C |
| Case | Fully metallic enclosure for low EMI |
| RoHS | ✓ |
| REACH | ✓ |

